

NEW

Krius® 科瑞斯

独立分隔内腔,防止线缆缠绕
Independent cavities for cables
preventing from interwinding

球头式设计,可多轴运动
Ball head design, multi-axis motion

强力锁扣设计不脱落
Strong lock design
preventing falling off

分体式锁片设计,可快速打开
Separated lock pieces design,
fastly removable

拆装便捷快速
Easy and quick assembly and disassembly

小节距,小半径
Small pitch, small radius

固定座可作为中间接头桥接
Fixed socket can be used as intermediary joint bridge

KR.65

Series Cable Chain
KR.65系列拖链

KR.65系列拖链

KR.65 Series Cable Chain

价格指数 Price index



可根据客户需求提供防火材料
Fire-proof materials are available if customized
可根据客户需求提供防静电材料
Anti-static materials are available if customized

功能特点 Features & Benefits

- 高性价比, 带锁定机制
- 分体式锁片, 均可单独打开
- 主体拆装便捷, 快速
- 独立线缆型腔, 防止相互缠绕
- 拖链方便加长和缩短
- 外观设计大方, 美观
- High performance and price ratio, being with locking mechanism
- Separated lock pieces can be removed respectively
- Easy and quick assembly and disassembly of the main body
- Independent cavities for cables preventing from interwinding
- Easy for shortening and lengthening
- Beautiful and elegant design

KR.65系列的适用场合 Application

- 安装空间限制
- 机器人手臂1-3轴运动
- 螺钉和铆接机器人焊接
- 控制面板应用
- 喷涂介质管
- 特殊的机械结构
- Limited room for installation
- 1-3 axis motion of Robotic arm
- Robotic welding of screwing and riveting
- Control panel application
- Coated medium tubing
- Special mechanical structure

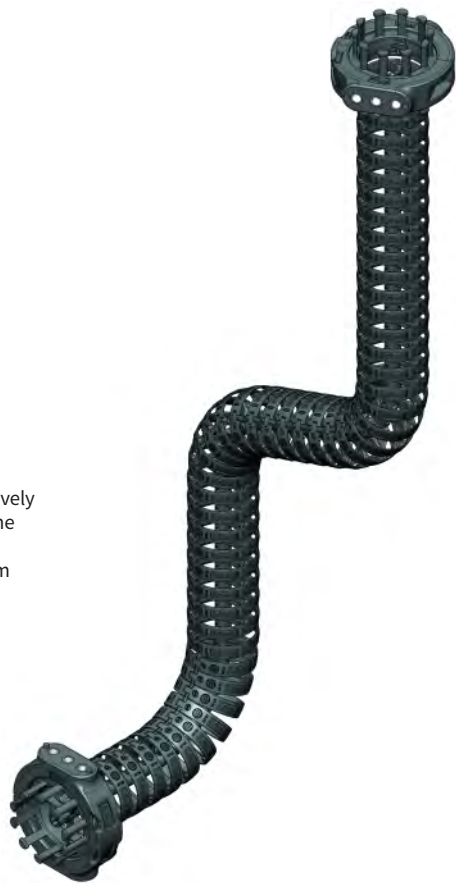
订购示例-整条拖链 Order details

请注明拖链长度或者链节数 如: 1米或11节
KR.65R100.B1.C3.N10
(KR.65弯曲半径100mm, 两端接头带梳状片, 中间接头数量3个, 链接数量10节)

KR.65*R*B1*C*N
(KR.65*弯曲半径*两端接头带梳状片*中间接头数量*链接数量)

Please mark the length or link number, such as 1 meter or 11 links
KR.65R100.B1.C3.N10
(KR.65 with bending radius as 100mm, brackets at both ends with tiwrap plates, 3 pcs of intermediary bracket, 10 links)

KR.65*R*B1*C*N
(KR.65*Bending radius*Brackets at both ends with tiwrap plates*number of intermediary brackets*number of links)



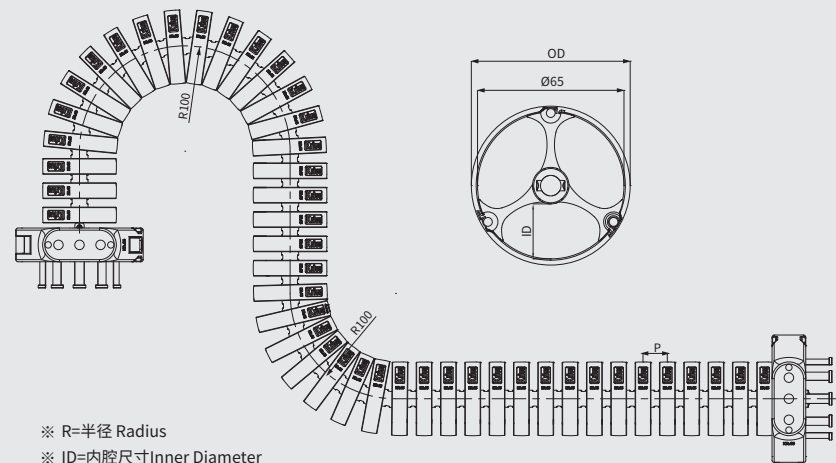
KR.65 拖链-安装尺寸及技术参数

KR.65 Cable Chain-Installation Dimensions and Technical Parameters

架空长度 Unsupported length

- Lg=直线架空长度 · Lg=Unsupported with straight upper run
- La=安全塌架架空长度 · La=Unsupported with permitted sag

KR.65 拖链 安装尺寸 KR.65 Cable chain-Installation Dimensions



- ※ R=半径 Radius
- ※ ID=内腔尺寸 Inner Diameter
- ※ OD=主体外径 Outer Diameter
- ※ P=节距 Pitch
- ※ N=每米链节数 Number of links per meter

R	ID	OD	P	N
mm(in.)	mm(in.)	mm(in.)	mm(in.)	mm(in.)
100(3.94)	24.5(0.96)	70.5(2.78)	23.1(0.91)	44(1.73)

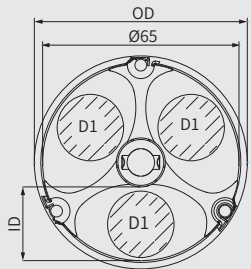
* 每米链节数: N=44 (1016.4mm) Links per meter:N=44(40.02in)

技术参数 Technical Parameters

材料-允许温度°C	Material-permitted temperature	Reinforce PA/-40°C~+125°C
阻燃等级, 增强尼龙	Flammability Class, Reinforced PA	UL94-HB

KR.65 拖链-产品规格范围 KR.65 Cable Chain-Product specifications

KR.65拖链-三片式锁片均可打开 KR.65 Cable Chain-three lock pieces are removable respectively



产品代码结构
Part Number Structure

KR.65*R*B1*C*N

- 数量节数 (Number of links)
- 中间接头 (Intermediary brackets)
- 两端接头带梳妆板 (Mounting brackets with tiwrap plate at both ends)
- 弯曲半径 (Bending radius)
- 拖链型号 (Type)

KR.65*R*B2*C*N

- 数量节数 (Number of links)
- 中间接头 (Intermediary brackets)
- 两端接头无梳妆板 (Mounting brackets without tiwrap plate at both ends)
- 弯曲半径 (Bending radius)
- 拖链型号 (Type)



型号 Type	A	B	C	D	E	F	G
KR.65	mm(in.) 25(0.98)	mm(in.) 32(1.26)	mm(in.) 9(0.35)	mm(in.) 121(4.76)	mm(in.) 40(1.57)	mm(in.) 20(0.79)	mm(in.) 126(4.96)

订货范例 Order details **KR.65 * R100 * 1000mm * 2**

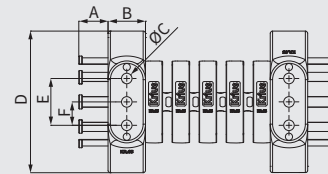
R	ID	OD	P	N
mm(in.) 100(3.94)	mm(in.) 24.5(0.96)	mm(in.) 70.5(2.78)	mm(in.) 23.1(0.91)	mm(in.) 44(1.73)

KR.65 拖链-拖链接头 KR.65 Cable Chain-Mounting Bracket

塑料接头 Plastic mounting bracket

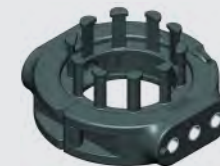
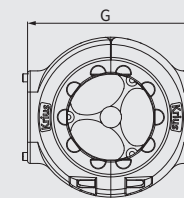
- 两侧接头均可单独打开
- 梳状板可根据需要进行选配
- 标准接头可作为中间接头
- 可提供预装配形式
- The mounting brackets at both ends are removable respectively
- Optional tiwrap plate according to your need
- Standard mounting bracket can be used as intermediary bracket
- Available preassembly form

可选配的接头安装方式 Available installation Methods



不带梳状板接头,
可为中间接头

The mounting bracket without tiwrap plate can be used as intermediary bracket



标准接头带梳状板
Standard mounting bracket with tiwrap plate

拖链型号 Type	其他编码 Other Code	OD	ID	电缆D1 max	
		mm (in.)	mm (in.)	mm (in.)	
KR.65	主体 Main body	K210319	70.5(2.78)	24.5(0.96)	22(0.87)
	梳状板 Tiwrap plate	K210305			
	锁片 Lock piece	K210316			
	锁扣 Lock latch	K210304			
	中心轴 Central shaft	K210303			

产品代码结构 Part Number Structure

KR.65R100.B1.C3.N10

- 拖链长度10节 (The cable chain length as 10 links)
- 中间接头数量3个 (3 pieces of intermediary bracket)
- 两端接头带梳妆板 (Mounting brackets with tiwrap plate at both ends)
- 弯曲半径 (Bending radius)
- 拖链型号 (Type)

★ 每款拖链的接头都有所不同, 订购时如有任何疑问, 请及时咨询科瑞斯。
Every bracket is different, please contact us if you have any question.