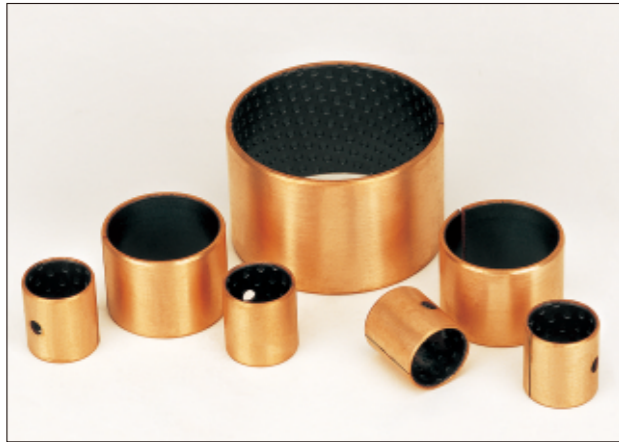


CSB-80 Steel Bronze Powder with PEEK/PTFE

Order RoHS

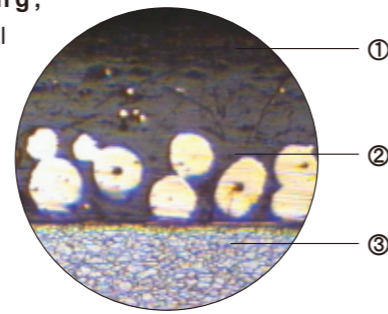


Structure

1. **PEEK+PTFE 0.30~0.50mm**, gives high wear resistance and low friction even only minute quantities of lubricant are supplied. This bearing surface carries a pattern of circular indents which should be filled with grease on assembly of the bearing.

2. **Bronze layer 0.20~0.35mm**, provides max. thermal conductivity away from the bearing surface, also serves as a reservoir for the PTFE/PEEK mixture.

3. **Steel backing**, provides mechanical strength and high load carrying capacity.



Features

1. CSB-80 provides maintenance-free operation
2. Operate satisfactorily without lubrication under light duty and low speed
3. CSB-80 has a high PV capability under high temperature
4. Temperature allowance is from -150°C~+250°C
5. Good chemical resistance
6. High static and dynamic load capacity
7. No water absorption
8. Suitable for rotating, oscillating, reciprocating and sliding movement.

Tech. Data

Max. load	Static	250N/mm ²	Friction coefficient	0.08~0.15		
	Very low speed	140N/mm ²		Max. speed	Pre-lubricated	2m/s
	Rotating oscillating	60N/mm ²			Oiling Grease	Continuous
Max. PV	Short-term operation	3.6N/mm ² *m/s	Thermal conductivity	50 W(m*K) ⁻¹		
	Continuous operation	1.8N/mm ² *m/s		Coefficient of thermal expansion	11*10 ⁻⁶ *K ⁻¹	
Temp. limit	-150°C~+250°C					

Typical Applications

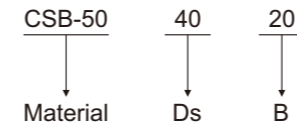
CSB-80 bearings application covers gear pump, ABS system, piston pump, gear motor, machine tools, agricultural machinery and so on. The materials is recommended with initial pre-lubrication at assembly.

Available

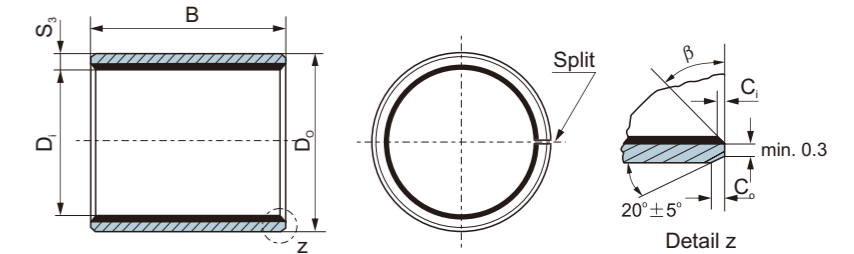
- Cylindrical Bushes
 - Thrust Washers
 - Non-standard parts as design
- CSB-80 is supplied by customer order, the tolerance is according to CSB-20 standard dimension.

CSB-50 / CSB-40 / CSB-11 (Metric Size)

Order Spec.



Materials: CSB-50, CSB-40, CSB-11



ID and OD chamfers

S ₃	C ₀	C ₁	α	β
0.75	0.5±0.3	0.5±0.3	20° ±8°	30° ±8°
1.00	0.6±0.4	0.6±0.3	20° ±8°	30° ±8°
1.50	0.6±0.4	0.7±0.3	20° ±8°	30° ±8°

S ₃	C ₀	C ₁	α	β
2.00	1.2±0.4	0.7±0.3	20° ±8°	30° ±8°
2.50	1.8±0.6	0.8±0.3	20° ±8°	30° ±8°

Unit:mm

Shaft D _s	Housing H7 D _H	OD tolerance D _o	ID after fixed D _{1a}	Clearance C _o	Wall thickness S ₃	B ⁰ _{-0.40} (d ≤ φ30 B-0.3) B ^{-0.4} (d > φ30 B-0.4)																
						6	8	10	12	15	20	25	30	40	50							
6 ^{-0.010} _{-0.022}	8 ^{+0.015}	8 ^{+0.055} _{+0.025}	6.055 5.990	0.077 0.000	1.005 0.980	0606	0608	0610														
8 ^{-0.013} _{-0.028}	10 ^{+0.015}	10 ^{+0.055} _{+0.025}	8.055 7.990	0.083 0.003		0806	0808	0810	0812	0815												
10 ^{-0.013} _{-0.028}	12 ^{+0.018}	12 ^{+0.065} _{+0.030}	10.058 9.990	0.086 0.003		1006	1008	1010	1012	1015	1020											
12 ^{-0.016} _{-0.034}	14 ^{+0.018}	14 ^{+0.065} _{+0.030}	12.058 11.990	0.092 0.006		1206	1208	1210	1212	1215	1220	1225										
13 ^{-0.016} _{-0.034}	15 ^{+0.018}	15 ^{+0.065} _{+0.030}	13.058 12.990						1310			1320										
14 ^{-0.016} _{-0.034}	16 ^{+0.018}	16 ^{+0.065} _{+0.030}	14.058 13.990						1410	1412	1415	1420	1425									
15 ^{-0.016} _{-0.034}	17 ^{+0.018}	17 ^{+0.065} _{+0.030}	15.058 14.990						1510	1512	1515	1520	1525									
16 ^{-0.016} _{-0.034}	18 ^{+0.018}	18 ^{+0.065} _{+0.030}	16.058 15.990						1610	1612	1615	1620	1625									
17 ^{-0.016} _{-0.034}	19 ^{+0.021}	19 ^{+0.075} _{+0.035}	17.061 16.990			0.095 0.006			1710	1712		1720										
18 ^{-0.016} _{-0.034}	20 ^{+0.021}	20 ^{+0.075} _{+0.035}	18.061 17.990					1810	1812	1815	1820	1825										
20 ^{-0.020} _{-0.041}	23 ^{+0.021}	23 ^{+0.075} _{+0.035}	20.071 19.990	0.112 0.010		1.505 1.475				2010	2012	2015	2020	2025	2030							
22 ^{-0.020} _{-0.041}	25 ^{+0.021}	25 ^{+0.075} _{+0.035}	22.071 21.990									2210	2212	2215	2220	2225	2230					
24 ^{-0.020} _{-0.041}	27 ^{+0.021}	27 ^{+0.075} _{+0.035}	24.071 23.990											2415	2420	2425	2430					
25 ^{-0.020} _{-0.041}	28 ^{+0.021}	28 ^{+0.075} _{+0.035}	25.071 24.990									2510	2512	2515	2520	2525	2530	2540	2550			
28 ^{-0.020} _{-0.041}	32 ^{+0.025}	32 ^{+0.085} _{+0.045}	28.085 27.990				0.126 0.010							2815	2820	2825	2830	2840				
30 ^{-0.020} _{-0.041}	34 ^{+0.025}	34 ^{+0.085} _{+0.045}	30.085 29.990										3012	3015	3020	3025	3030	3040				
32 ^{-0.025} _{-0.050}	36 ^{+0.025}	36 ^{+0.085} _{+0.045}	32.085 31.990	0.135 0.015		2.005 1.970							3220		3230	3240						
35 ^{-0.025} _{-0.050}	39 ^{+0.025}	39 ^{+0.085} _{+0.045}	35.085 34.990											3512	3515	3520	3525	3530	3540	3550		
38 ^{-0.025} _{-0.050}	42 ^{+0.025}	42 ^{+0.085} _{+0.045}	38.085 37.990											3815			3830	3840				
40 ^{-0.025} _{-0.050}	44 ^{+0.025}	44 ^{+0.085} _{+0.045}	40.085 39.990												4012		4020	4025	4030	4040	4050	

CSB-50 / CSB-40 / CSB-11 (Metric Size)

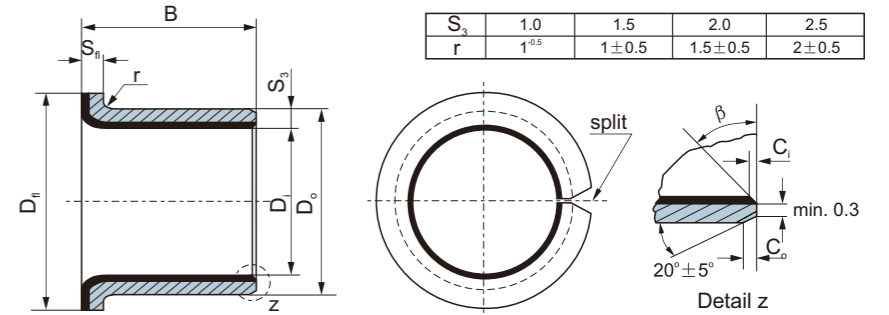
Unit:mm

Shaft D _s	Housing H7 D _H	OD tolerance D _O	ID after fixed D _{I,a}	Clearance C _D	Wall thick- ness S ₃	B ⁰ _{-0.40}														
						20	25	30	40	50	60	70	80	100	115					
45 ^{-0.050} _{-0.025}	50 ^{+0.025}	50 ^{+0.085} _{+0.045}	45.105 44.990	0.155 0.015	2.505 2.460	4520	4525	4530	4540	4550										
50 ^{-0.050} _{-0.025}	55	55 ^{+0.100} _{+0.055}	50.110 49.990	0.160 0.015		5020		5030	5040	5050	5060									
55 ^{-0.060} _{-0.030}	60 ^{+0.030}	60 ^{+0.100} _{+0.055}	55.110 54.990	0.170 0.020				5530	5540	5550	5560									
60 ^{-0.060} _{-0.030}	65	65 ^{+0.100} _{+0.055}	60.110 59.990						6030	6040	6050	6060	6070							
65 ^{-0.060} _{-0.030}	70 ^{+0.030}	70 ^{+0.100} _{+0.055}	65.110 64.990						6530	6540	6550	6560	6570							
70 ^{-0.060} _{-0.030}	75	75 ^{+0.100} _{+0.055}	70.110 69.990	0.201 0.020					7040	7050	7060	7070	7080							
75 ^{-0.060} _{-0.030}	80 ^{+0.030}	80 ^{+0.100} _{+0.055}	75.110 74.990						7530	7540	7550	7560	7570	7580						
80 ^{-0.046}	85	85 ^{+0.120} _{+0.070}	80.155 80.020	0.209 0.020	2.490 2.440				8040	8050	8060	8070	8080	80100						
85 ^{-0.054}	90 ^{+0.035}	90 ^{+0.120} _{+0.070}	85.155 85.020							8540		8560		8580	85100					
90 ^{-0.054}	95	95 ^{+0.120} _{+0.070}	90.155 90.020							9040	9050	9060	9080	90100						
95 ^{-0.054}	100 ^{+0.035}	100 ^{+0.120} _{+0.070}	95.155 95.020								9550	9560	9580	95100						
100 ^{-0.054}	105	105 ^{+0.120} _{+0.070}	100.155 100.020									10050	10060	10080		100115				
105 ^{-0.054}	110 ^{+0.035}	110 ^{+0.120} _{+0.070}	105.155 105.020										10560	10580		105115				
110 ^{-0.054}	115	115 ^{+0.120} _{+0.070}	110.155 110.020										11060	11080		110115				
120 ^{-0.054}	125 ^{+0.040}	125 ^{+0.170} _{+0.100}	120.210 120.070			0.264 0.070	2.465 2.415						12060	12080	120100					
125 ^{-0.063}	130	130 ^{+0.170} _{+0.100}	125.210 125.070												12560		125100	125115		
130 ^{-0.063}	135 ^{+0.040}	135 ^{+0.170} _{+0.100}	130.210 130.070												13060	13080	130100			
140 ^{-0.063}	145	145 ^{+0.170} _{+0.100}	140.210 140.070										14060	14080	140100					
150 ^{-0.063}	155 ^{+0.040}	155 ^{+0.170} _{+0.100}	150.210 150.070										15060	15080	150100					
160 ^{-0.063}	165	165 ^{+0.170} _{+0.100}	160.210 160.070										16060	16080	160100	160115				
180 ^{-0.063}	185 ^{+0.046}	185 ^{+0.210} _{+0.130}	180.216 180.070	0.279 0.070	2.465 2.415									18080	180100					
190 ^{-0.072}	195	195 ^{+0.210} _{+0.130}	190.216 190.070													19080	190100			
200 ^{-0.072}	205 ^{+0.046}	205 ^{+0.210} _{+0.130}	200.216 200.070					0.288 0.070							20060	20080	200100			
220 ^{-0.072}	225	225 ^{+0.210} _{+0.130}	220.216 220.070														22080	220100		
250 ^{-0.072}	255 ^{+0.052}	255 ^{+0.260} _{+0.170}	250.222 250.070			0.294 0.070									25080	250100				
260 ^{-0.081}	265	265 ^{+0.260} _{+0.170}	260.222 260.070													26080	260100			
280 ^{-0.081}	285 ^{+0.052}	285 ^{+0.260} _{+0.170}	280.222 280.070			0.303 0.070										28080	280100			
300 ^{-0.081}	305	305 ^{+0.260} _{+0.170}	300.222 300.070														30080	300100		

CSB-50 / CSB-40 / CSB-11 (Metric Size)

Order Spec.

CSB-50 F 25 115
Material Flange D_s B
Materials: CSB-50, CSB-40, CSB-11



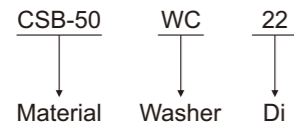
Unit:mm

Shaft D _s	Housing H7 D _H	OD tolerance D _O	ID after fixed D _{I,a}	Clearance C _D	Designation	Wall thickness S ₃	Dimension					
							D _i	D _O	D _i ± 0.5	B± 0.25	S _n -0.2	
6 ^{-0.013} _{-0.028}	8 ^{+0.015}	8 ^{+0.055} _{+0.025}	6.055 5.990	0.077 0.000	F06040	1.005 0.980	6	8	12	4	1	
					F06070					7		
8 ^{-0.013} _{-0.028}	10 ^{+0.015}	10 ^{+0.055} _{+0.025}	8.055 7.990	0.083 0.003	F08055		8	10	15	5.5		15
					F08075					7.5		
10 ^{-0.016} _{-0.034}	12 ^{+0.018}	12 ^{+0.055} _{+0.025}	10.058 9.990	0.086 0.003	F10070		10	12	18	7		18
					F10090					9		
					F10120					12		
12 ^{-0.016} _{-0.034}	14 ^{+0.018}	14 ^{+0.065} _{+0.030}	12.058 11.990	0.092 0.006	F12070		12	14	20	7		20
					F12090					9		
					F12120					12		
					F12170	17						
14 ^{-0.016} _{-0.034}	16 ^{+0.018}	16 ^{+0.065} _{+0.030}	14.058 13.990	0.092 0.006	F14120	14	16	22	12	22		
					F14170				17			
					F15090				9			
15 ^{-0.016} _{-0.034}	17 ^{+0.018}	17 ^{+0.065} _{+0.030}	15.058 14.990	0.092 0.006	F15120	15	17	23	12	23		
					F15170				17			
					F16120				12			
16 ^{-0.016} _{-0.034}	18 ^{+0.018}	18 ^{+0.065} _{+0.030}	16.058 15.990	0.092 0.006	F16170	16	18	24	17	24		
					F18120				12			
					F18170				17			
18 ^{-0.016} _{-0.034}	20 ^{+0.021}	20 ^{+0.075} _{+0.035}	18.061 17.990	0.095 0.006	F18200	18	20	26	20	26		
					F20115				11.5			
					F20165				16.5			
20 ^{-0.020} _{-0.041}	23 ^{+0.021}	23 ^{+0.075} _{+0.035}	20.071 19.990	0.112 0.010	F20215	20	23	30	21.5	30		
					F22150				15			
					F22200				20			
22 ^{-0.020} _{-0.041}	25 ^{+0.021}	25 ^{+0.075} _{+0.035}	22.071 21.990	0.112 0.010	F25115	22	25	32	11.5	32		
					F25165				16.5			
					F25215				21.5			
25 ^{-0.020} _{-0.041}	28 ^{+0.021}	28 ^{+0.075} _{+0.035}	25.071 24.990	0.112 0.010	F30160	25	28	35	16	35		
					F30260				26			
					F35160				16			
30 ^{-0.025} _{-0.050}	34 ^{+0.025}	34 ^{+0.075} _{+0.035}	30.085 29.990	0.126 0.010	F35260	30	34	42	26	42		
					F40260				26			
					F40400				40			
35 ^{-0.025} _{-0.050}	39 ^{+0.025}	39 ^{+0.085} _{+0.045}	35.085 34.990	0.135 0.015	F40400	35	39	47	26	47		
					F40400				26			
					F40400				40			
40 ^{-0.025} _{-0.050}	44 ^{+0.025}	44 ^{+0.085} _{+0.045}	40.085 39.990	0.135 0.015	F40400	40	44	53	40	53		
					F40400				40			
					F40400				40			

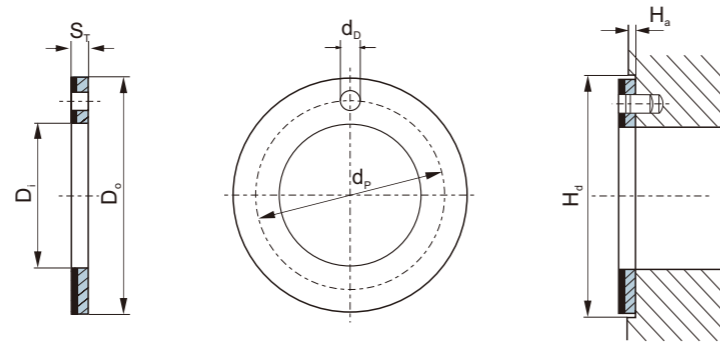
CSB-50 / CSB-40 / CSB-11 (Metric Size)

Metric thrust washer

Order Spec.



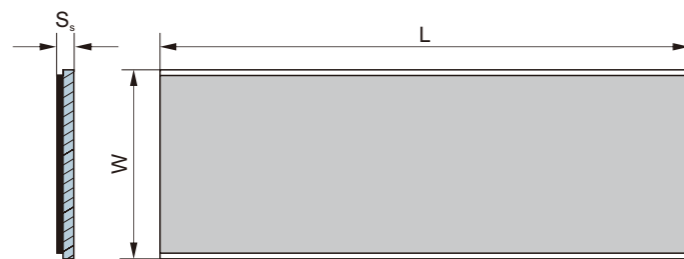
Materials: CSB-50, CSB-40, CSB-11



Unit:mm

Shaft D _s	Designation	Washer dimension				Installation size			H _a +0.12
		D _i +0.25	D _o -0.25	S _r ^{-0.01} / _{-0.06}	d _p ±0.125	d _s ^{+0.4} / _{+0.1}	H _d ±0.2	H _a ±0.12	
8	WC10	10	20	1.5	15	1.5	1	20	
10	WC12	12	24		18			24	
12	WC14	14	26		20	26			
14	WC16	16	30		23	30			
16	WC18	18	32		25	32			
18	WC20	20	36		28	36			
20	WC22	22	38		30	38			
22	WC24	24	42		33	42			
24	WC26	26	44		35	44			
26	WC28	28	48		38	48			
30	WC32	32	54	43	54				
36	WC38	38	62	50	62				
40	WC42	42	66	54	66				
46	WC48	48	74	61	74				
50	WC52	52	78	65	78				
60	WC62	62	90	76	90				

Metric standard strip

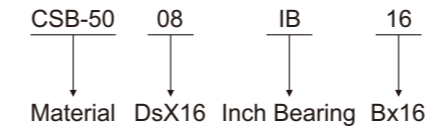


Unit:mm

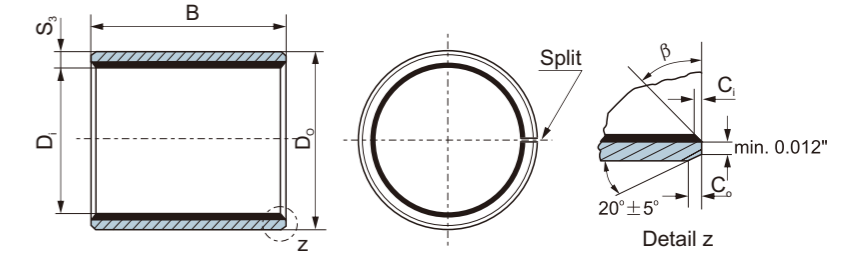
Type	Length ± 1	Width ± 1	Thickness -0.05
SP	500	150	1.0
SP	500	150	1.5
SP	500	150	2.0
SP	500	150	2.5

CSB-50 / CSB-40 / CSB-11 (Inch Size)

Order Spec.



Materials: CSB-50, CSB-40, CSB-11



ID and OD chamfers

S ₃	C _o	C _i	α	β	S ₃	C _o	C _i	α	β
0.0315	0.008-0.031	0.008-0.031	20° ±8°	30° ±8°	0.0787	0.031-0.063	0.016-0.039	20° ±8°	30° ±8°
0.0472	0.008-0.039	0.012-0.035	20° ±8°	30° ±8°	0.0945	0.047-0.094	0.020-0.043	20° ±8°	30° ±8°
0.0630	0.008-0.039	0.016-0.039	20° ±8°	30° ±8°					

Unit: inch"

Shaft D _s	Housing H7 D _h	ID after fixed D _{1a}	Clearance C _o	Length ±0.010					
0.1243 0.1236	0.1878 0.1873	0.1268 0.1243	0.0032 0.0000	02IB02	02IB03				
0.1554 0.1547	0.2191 0.2186	0.1581 0.1556	0.0034 0.0002	025IB025	025IB04				
0.1865 0.1858	0.2503 0.2497	0.1893 0.1867	0.0035 0.0002	03IB03	03IB04	03IB06			
0.2490 0.2481	0.3128 0.3122	0.2518 0.2492	0.0037 0.0002	04IB04	04IB06				
0.3115 0.3106	0.3753 0.3747	0.3143 0.3117		05IB06	05IB08				
0.3740 0.3731	0.4691 0.4684	0.3769 0.3742	0.0038 0.0002	06IB03	06IB04	06IB06	06IB08	06IB10	06IB12
0.4365 0.4355	0.5316 0.5309	0.4394 0.4367		07IB08	07IB12				
0.4990 0.4980	0.5941 0.5934	0.5019 0.4992	0.0039 0.0002	08IB04	08IB06	08IB08	08IB10	08IB12	08IB14
0.5615 0.5605	0.6566 0.6559	0.5644 0.5617		09IB06	09IB08	09IB10	09IB12		
0.6240 0.6230	0.7192 0.7184	0.6270 0.6242	0.0040 0.0002	10IB04	10IB08	10IB10	10IB12	10IB14	10IB16
0.6865 0.6855	0.7817 0.7809	0.6895 0.6867		11IB14					
0.7491 0.7479	0.8755 0.8747	0.7525 0.7493		12IB04	12IB06	12IB08	12IB10	12IB12	12IB16
0.8116 0.8104	0.9380 0.9372	0.8150 0.8118	0.0046 0.0002	13IB12	13IB18				
0.8741 0.8729	1.0005 0.9997	0.8775 0.8743		14IB04	14IB06	14IB12	14IB16	14IB20	
0.9991 0.9979	1.1255 1.1247	1.0025 0.9993		16IB06	16IB08	16IB12	16IB16	16IB20	16IB24
1.1238 1.1226	1.2818 1.2808	1.1278 1.1240	0.0052 0.0002	18IB06	18IB10	18IB12	18IB16		
1.2488 1.2472	1.4068 1.4058	1.2528 1.2490		20IB06	20IB12	20IB14	20IB16	20IB20	20IB28
1.3738 1.3722	1.5318 1.5308	1.3778 1.3740	0.0056 0.0002	22IB12	22IB12	22IB24	22IB28		
1.4988 1.4972	1.6568 1.6558	1.5028 1.4990		24IB08	24IB16	24IB18	24IB20	24IB24	24IB32
1.6238 1.6222	1.7818 1.7808	1.6278 1.6240		26IB16	26IB24				
1.7487 1.7471	1.9381 1.9371	1.7535 1.7489	0.0064 0.0002	28IB16	28IB24	28IB32			

CSB-50 / CSB-40 / CSB-11 (Inch Size)

Unit: inch"

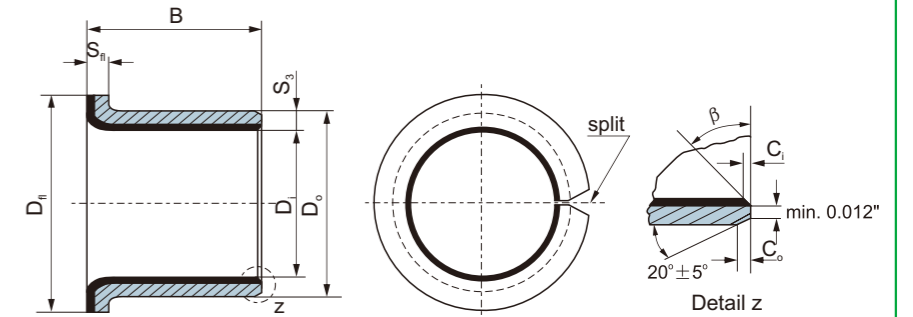
Shaft D _s	Housing H7 D _H	ID after fixed D _{1a}	Clearance C _D	Length ± 0.010												
				30IB12	30IB16	30IB36										
1.8737 1.8721	2.0633 2.0621	1.8787 1.8739	0.0066 0.0002	30IB12	30IB16	30IB36										
1.9987 1.9969	2.1883 2.1871	2.0037 1.9989	0.0068 0.0002	32IB08	32IB16	32IB24	32IB28	32IB32	32IB40							
2.1257 2.1239	2.3130 2.3118	2.1326 2.1262		34IB48												
2.2507 2.2489	2.4377 2.4365	2.2573 2.2509		36IB28	36IB32	36IB40	36IB48	36IB56	36IB60	36IB64	36IB72					
2.5011 2.4993	2.6881 2.6869	2.5077 2.5013		40IB16	40IB26	40IB32	40IB40	40IB48	40IB56	40IB60	40IB64	40IB72				
2.7500 2.7482	2.9370 2.9358	2.7566 2.7502		44IB32	44IB36	44IB40	44IB48	44IB56	44IB60	44IB64	44IB72	44IB76				
2.8752 2.8734	3.0623 3.0610	2.8819 2.8754	0.0085 0.0002	46IB32	46IB36	46IB40	46IB48	46IB56	46IB60	46IB64	46IB72	46IB76				
3.0000 2.9982	3.1872 3.1858	3.0068 3.0002	0.0086 0.0002	48IB32	48IB36	48IB40	48IB48	48IB56	48IB60	48IB64	48IB72	48IB76				
3.2500 3.2480	3.4372 3.4358	3.2568 3.2502	0.0088 0.0002	52IB32	52IB36	52IB40	52IB48	52IB56	52IB60	52IB64	52IB72	52IB76				
3.5000 3.4978	3.6872 3.6858	3.5068 3.5002		56IB32	56IB36	56IB40	56IB48	56IB56	56IB60	56IB64	56IB72	56IB76				
3.6250 3.6228	3.8122 3.8108	3.6318 3.6252		58IB32	58IB36	58IB40	58IB48	58IB56	58IB60	58IB64	58IB72	58IB76				
3.7500 3.7478	3.9372 3.9358	3.7568 3.7502	0.0090 0.0002	60IB32	60IB36	60IB40	60IB48	60IB56	60IB60	60IB64	60IB72	60IB76				
4.0000 3.9978	4.1872 4.1858	4.0068 4.0002		64IB32	64IB36	64IB40	64IB48	64IB56	64IB60	64IB64	64IB72	64IB76				
4.2500 4.2478	4.4372 4.4358	4.2568 4.2502		68IB32	68IB36	68IB40	68IB48	68IB56	68IB60	68IB64	68IB72	68IB76				
4.3750 4.3728	4.5622 4.5608	4.3818 4.3752		70IB32	70IB36	70IB40	70IB48	70IB56	70IB60	70IB64	70IB72	70IB76				
4.5000 4.4978	4.6872 4.6858	4.5068 4.5002		72IB32	72IB36	72IB40	72IB48	72IB56	72IB60	72IB64	72IB72	72IB76				
4.7500 4.7478	4.9374 4.9358	4.7572 4.7502	0.0094 0.0002	76IB32	76IB36	76IB40	76IB48	76IB56	76IB60	76IB64	76IB72	76IB76				
4.9986 4.9961	5.1860 5.1844	5.0056 4.9988		80IB32	80IB36	80IB40	80IB48	80IB56	80IB60	80IB64	80IB72	80IB76				
5.2500 5.2475	5.4374 5.4358	5.2570 5.2502		84IB32	84IB36	84IB40	84IB48	84IB56	84IB60	84IB64	84IB72	84IB76				
5.5000 5.4975	5.6874 5.6858	5.5070 5.5002		88IB32	88IB36	88IB40	88IB48	88IB56	88IB60	88IB64	88IB72	88IB76				
5.7500 5.7475	5.9374 5.9358	5.7570 5.7502		92IB32	92IB36	92IB40	92IB48	92IB56	92IB60	92IB64	92IB72	92IB76				
6.0000 5.9975	6.1874 6.1858	6.0070 6.0002		96IB32	96IB36	96IB40	96IB48	96IB56	96IB60	96IB64	96IB72	96IB76				
6.2500 6.2475	6.4374 6.4358	6.2570 6.2502		100IB32	100IB36	100IB40	100IB48	100IB56	100IB60	100IB64	100IB72	100IB76				
6.5000 6.4975	6.6874 6.6858	6.5070 6.5002		104IB32	104IB36	104IB40	104IB48	104IB56	104IB60	104IB64	104IB72	104IB76				
6.7500 6.7475	6.9374 6.9358	6.7570 6.7502		108IB32	108IB36	108IB40	108IB48	108IB56	108IB60	108IB64	108IB72	108IB76				
6.9954 6.9929	7.1830 7.1812	7.0026 6.9956	0.0097 0.0002	112IB32	112IB36	112IB40	112IB48	112IB56	112IB60	112IB64	112IB72	112IB76				

CSB-50 / CSB-40 / CSB-11 (Inch Size)

Order Spec.

CSB-50 08 FIB 16
Material DsX16 Flanged Bx16
Inch Bearing

Materials: CSB-50, CSB-40, CSB-11



Unit: inch"

Shaft D _s	Housing H7 D _H	ID after fixed D _{1a}	Clearance C _D	Nominal Flange D _n	Flange Thickness S _n	Length ± 0.010			
						06FIB04	06FIB06	06FIB08	06FIB12
0.3750 0.3740	0.4691 0.4684	0.3779 0.3752	0.0039 0.0002	0.7075 0.6675	0.052 0.044	06FIB04	06FIB06	06FIB08	06FIB12
0.5000 0.4990	0.5941 0.5934	0.5029 0.5002	0.0039 0.0002	0.8325 0.7925	0.052 0.044	08FIB04	08FIB06	08FIB08	08FIB12
0.6250 0.6240	0.7192 0.7184	0.6280 0.6252	0.0040 0.0002	0.9575 0.9175	0.052 0.044	10FIB06	10FIB08	10FIB10	10FIB12
0.7500 0.7488	0.8755 0.8747	0.7534 0.7502	0.0046 0.0002	1.1450 1.1050	0.068 0.060	12FIB06	12FIB08	12FIB12	12FIB16
0.8750 0.8738	1.0005 0.9997	0.8784 0.8752	0.0046 0.0002	1.2200 1.1800	0.068 0.060	14FIB08	14FIB12	14FIB16	14FIB20
1.0000 0.9988	1.1255 1.1247	1.0034 1.0002	0.0046 0.0002	1.3950 1.3550	0.068 0.060	16FIB08	16FIB12	16FIB16	16FIB20
1.2500 1.2484	1.4068 1.4058	1.2540 1.2502	0.0056 0.0002	1.7700 1.7300	0.083 0.075	20FIB16	20FIB20	20FIB24	
1.5000 1.4984	1.6568 1.6558	1.5040 1.5002	0.0056 0.0002	2.0200 1.9800	0.083 0.075	24FIB16	24FIB24	24FIB32	
1.7500 1.7484	1.9381 1.9371	1.7548 1.7502	0.0064 0.0002	2.3950 2.3550	0.098 0.090	28FIB16	28FIB24	28FIB32	